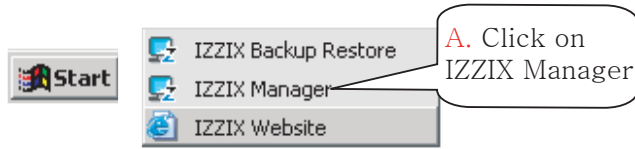


IZZIX Manager Console

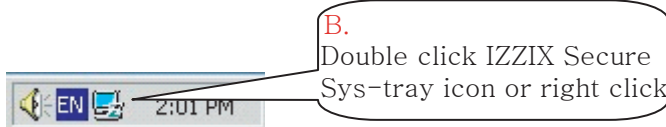
The "IZZIX Manager Console Center", being centralized, is a very simply way to manage all your needs to control your workstation sign-on and desktop.

There are two ways you can enter the IZZIX Manager Console:

A. Go to Start, Programs, then IZZIX Secure, and then click on IZZIX Manager.



B. Go to the Sys-tray on the bottom right corner and either double click icon or you can also right click on the IZZIX Manager icon to select Manager.



Place finger on scanner when prompted to access the Console.

The IZZIX Manager Console is your central control center to add users, limit their rights and set admin options. Only users with Administrator rights can enter into the console to configure other users and only after your fingerprint is verified confirming your access rights.

A- Admin Menu >

- Set Security levels
- Block Registry Editor
- Block Disk Removal
- Disable Password Logon

B- Add Users

C- Edit User info

D- Delete User

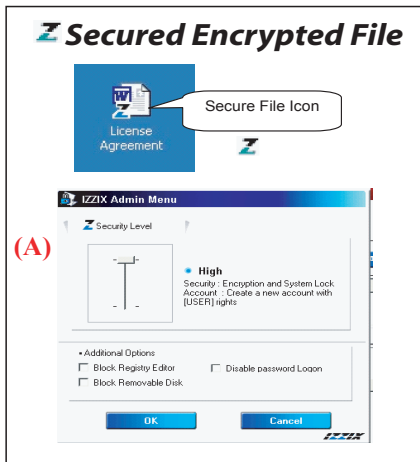
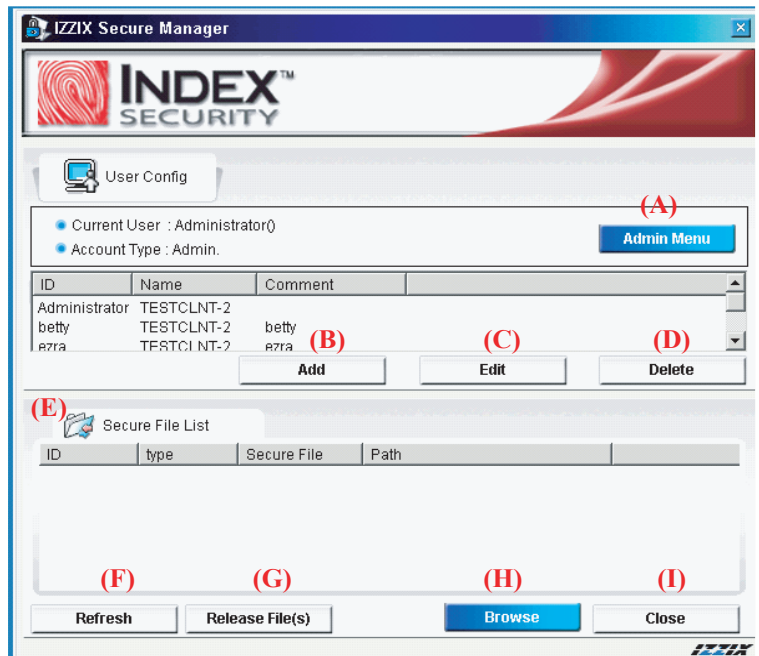
E- Secured File List

F- Refresh File List

G- Release Files

H- Browse to Lock or Secure Files

I- Close IZZIX Manage Console



As the administrator, once the IZZIX Manager Console is opened, pick options and fill in needed selections or data. Administrators can override regular users, so be selective who has administrative or user rights.

The complete IZZIX manual is located on the CD provided or can be downloaded from: www.index-security.com



www.index-security.com
support@index-security.com
 800-983-8529